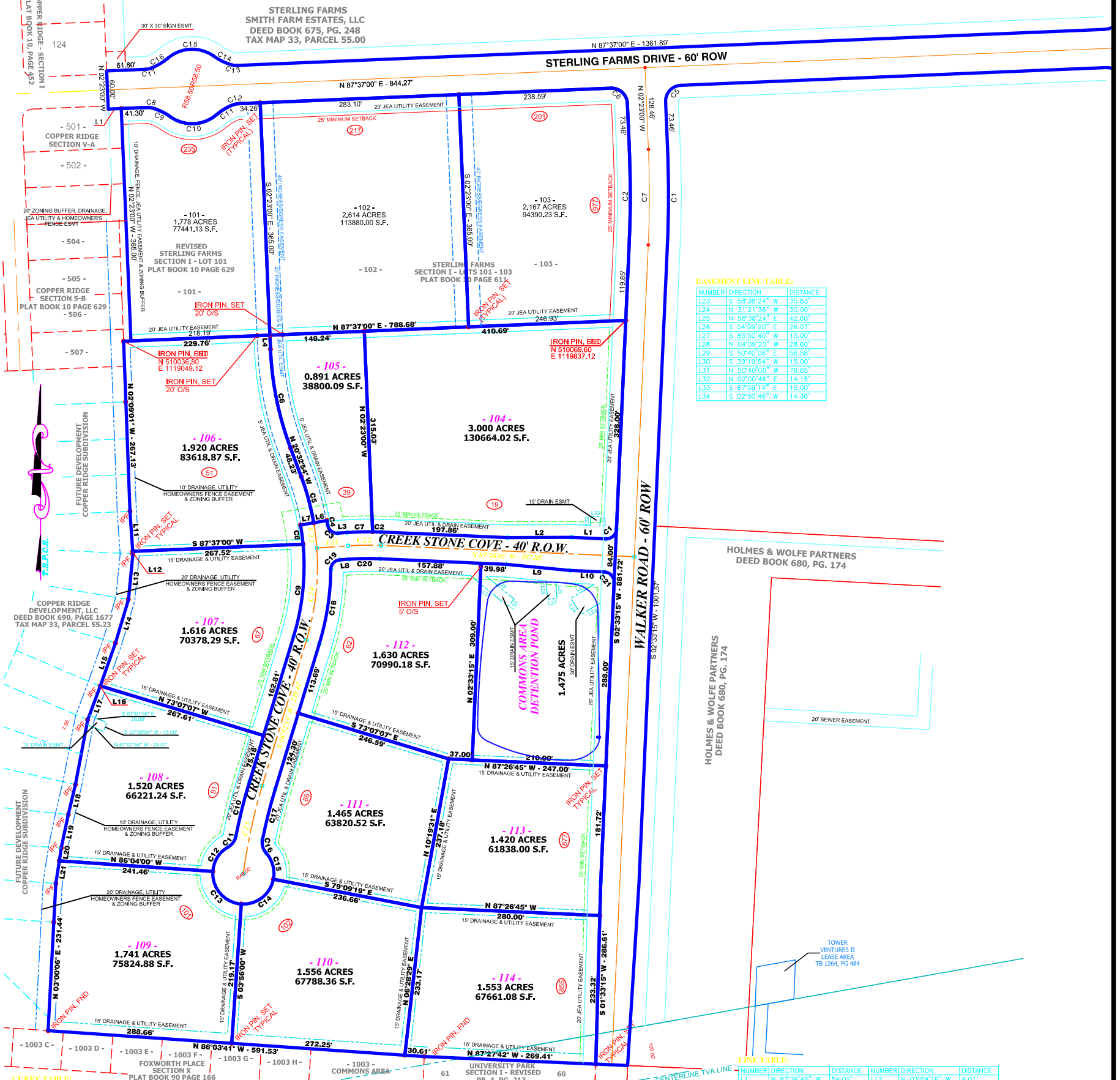


VICINITY MAP NOT TO SCALE



**EASEMENT LINE TABLE:**

NUMBER	DIRECTION	DISTANCE
L23	S 48°38'24" W	15.83'
L24	N 31°21'36" W	30.00'
L25	N 88°38'24" E	42.60'
L26	S 04°09'20" E	26.07'
L27	S 85°50'40" W	15.00'
L28	N 04°09'20" W	28.60'
L29	S 80°40'06" E	56.98'
L30	S 39°19'54" W	15.00'
L31	N 50°40'06" W	76.65'
L32	N 02°00'46" E	14.15'
L33	S 87°59'14" E	15.00'
L34	S 02°00'46" W	14.30'

**CURVE TABLE:**

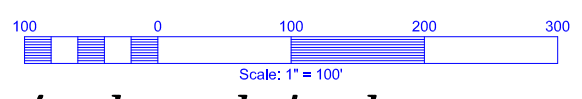
NUMBER	RADIUS	ARC LENGTH	CHORD DIRECTION	CHORD LENGTH
C1	16.00	25.13	S 47°33'15" W	22.63
C2	471.00	14.17	N 88°18'28" W	14.17
C3	15.00	22.32	N 51°28'14" W	20.32
C4	421.00	7.32	N 09°17'11" W	7.32
C5	400.00	75.15	N 15°09'59" W	75.04
C6	500.00	158.52	N 11°27'57" W	157.86
C7	471.00	40.14	S 88°23'20" W	40.12
C8	379.00	30.39	S 07°29'15" E	30.38
C9	379.00	146.00	S 05°50'43" W	145.10
C10	870.25	89.24	S 14°02'14" W	89.20
C11	24.00	20.73	S 35°50'47" W	20.09
C12	48.00	47.47	S 32°15'48" W	45.56
C13	48.00	75.40	S 41°04'00" E	67.88
C14	48.00	69.61	N 52°23'20" E	63.67
C15	48.00	44.26	N 15°34'25" W	42.71
C16	24.00	22.32	N 15°20'44" W	21.53
C17	828.28	82.09	N 14°08'25" E	82.05
C18	421.00	119.02	N 08°46'57" E	118.62
C19	15.00	22.32	N 43°18'57" E	20.32
C20	429.00	49.47	N 89°15'03" E	49.44
C21	16.00	25.13	S 47°38'46" E	22.63
C22	450.00	51.89	S 89°15'03" W	51.86
C23	400.00	40.02	N 06°55'06" W	40.00
C24	400.00	146.14	S 06°24'52" W	145.33
C25	849.25	140.48	S 12°08'33" W	140.32

**LINE TABLE:**

NUMBER	DIRECTION	DISTANCE	NUMBER	DIRECTION	DISTANCE
L1	N 87°26'45" W	54.02'	L12	N 03°59'16" W	4.01'
L2	S 89°41'31" W	100.12'	L13	N 05°33'31" E	71.91'
L3	S 85°56'51" W	14.52'	L14	N 16°38'45" E	71.22'
L4	N 02°23'00" E	22.16'	L15	N 19°23'42" E	71.56'
L6	S 80°12'56" W	21.00'	L16	N 19°23'42" E	0.41'
L7	S 80°12'56" W	21.00'	L17	N 20°22'31" E	56.06'
L8	N 85°56'51" E	14.52'	L18	N 13°18'45" E	48.48'
L9	S 84°35'00" E	100.12'	L19	N 13°18'45" E	53.57'
L10	S 87°26'45" E	54.02'	L20	N 08°41'00" E	20.33'
L11	N 03°59'16" W	62.90'	L21	N 08°41'00" E	35.88'
			L22	S 85°56'51" W	49.03'

**FINAL PLAT**  
**STERLING FARMS Section I**  
**LOTS 101-114**

REALTY INVESTORS GROUP, LLC  
 TAX MAP 33, PARCEL 55.24 - DEED BOOK 675, PAGE 248  
 SMITH FARM ESTATES, LLC  
 TAX MAP 33, PARCEL 55.00 - DEED BOOK 675, PAGE 248  
 JACKSON, MADISON COUNTY, TENNESSEE  
 ZONED SC-1 (PLANNED UNIT COMMERCIAL DEVELOPMENT)  
 SECTION I (LOTS 104-114) - 11 LOTS - 20,917 ACRES



[jacksonlotsales.com](http://jacksonlotsales.com)

T.S.P.C.S.